

FAST EnergyCam supported meters

Features and restrictions as of December 2013 (build 10565)

Supported meters

- Max. number of digits: 8
- Decimal place: One decimal place will be recognized if marked by red
- Sense of counting: Forward meter readings only
- Multiple tariff meters: One counter per EnergyCam only, less accurate meter readings in upside down mode
- Font colour default: white digits on black. Optional: black digits on white (bulk water meters)
- Counter dimensions: max. 40 - 60 mm wide, depending on distance between counter and camera
- Max. distance between counter and camera: 35 mm
- Font size: min. 5 mm character height
- Supported counters (examples):

Electricity



Gas



Water



Supported meters with installed EnergyCam

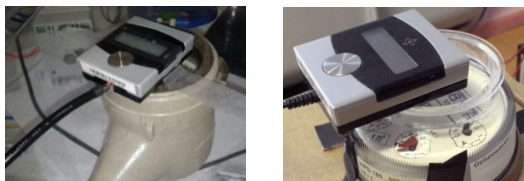
Electricity



Gas



Water



Adapters available for specific meters

- Gas Meter Adapter (Art. 2001) for EnergyCam installation on diaphragm type gas meters
- Water Meter Adapter (Art. 2002) for EnergyCam installation on bulk water meters
- 2-tariff Adapter (Art. 2003) for installation of 2 EnergyCam on multiple tariff meters
- Wedge adapter 5° and 10° to adjust camera angle
- Shelter cap preventing direct light disturbance on counter